

LIV COLLINS
STUDIOS



Hey I'm Liv!

Artist, writer, designer & tea lover

My work is all about:

- ✧ Amplifying women, non-binary and LGBTQIA+ people <3
- ✧ Joy!
- ✧ Creating impactful collaborations :)



Restless Development

80-page impact report

Layout, illustrative elements* and joyful graphics for an engaging, accessible and playful report!

*illustrated icons created by nooh Studios.

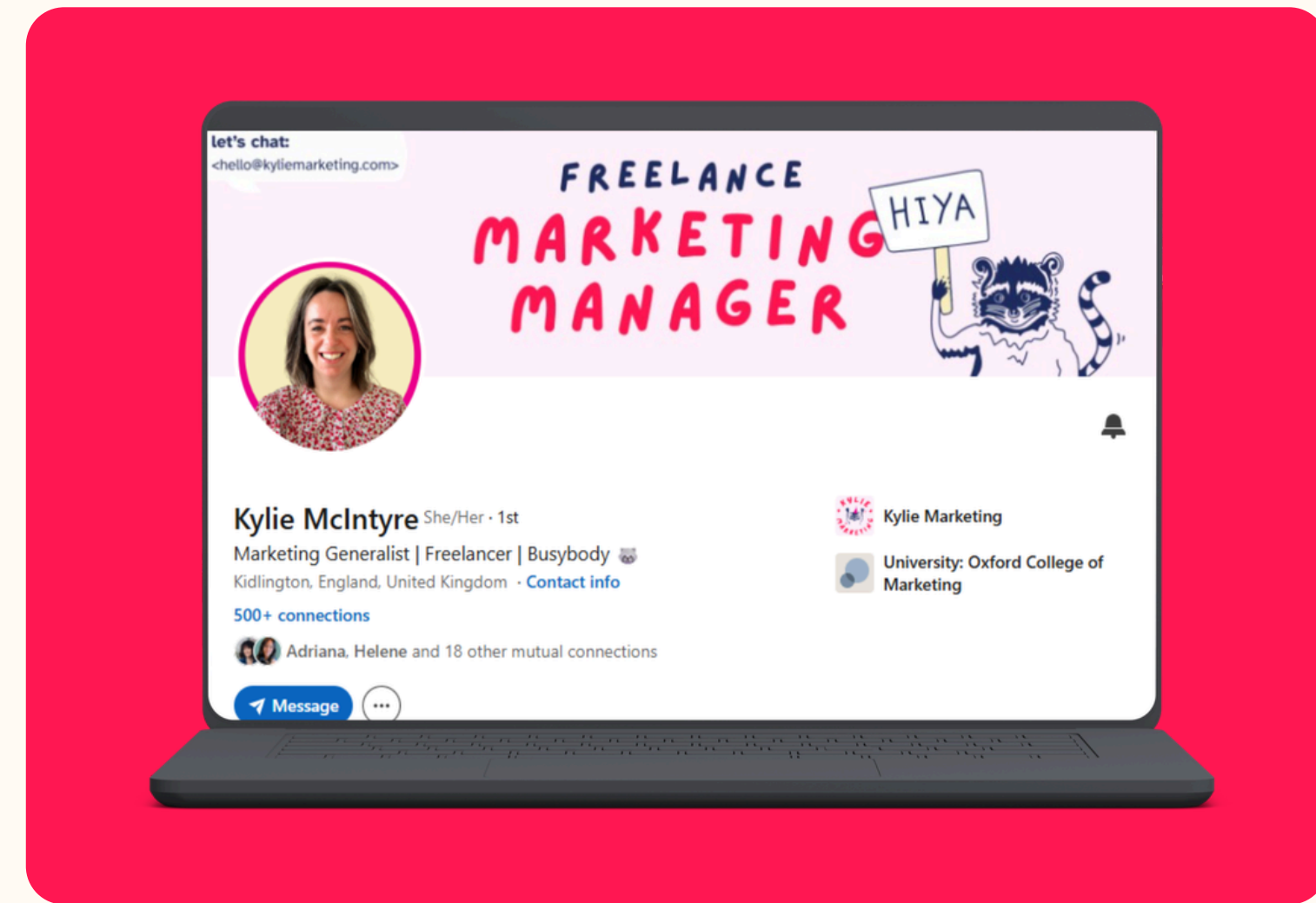
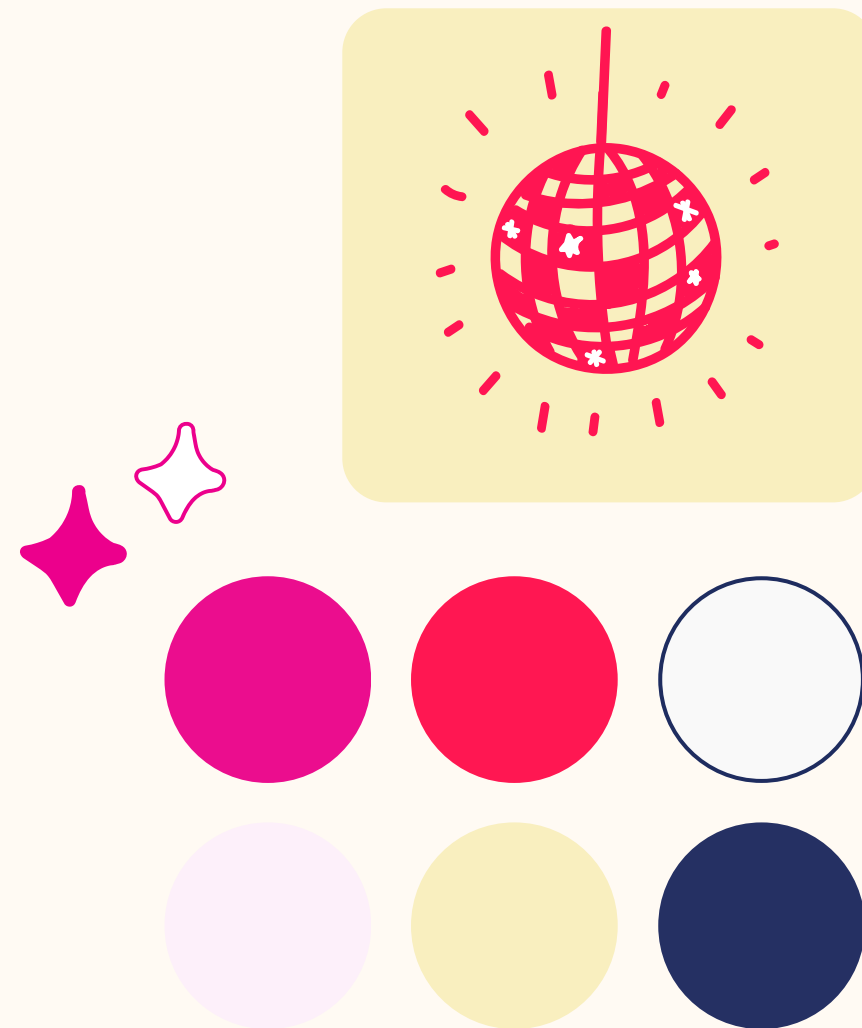


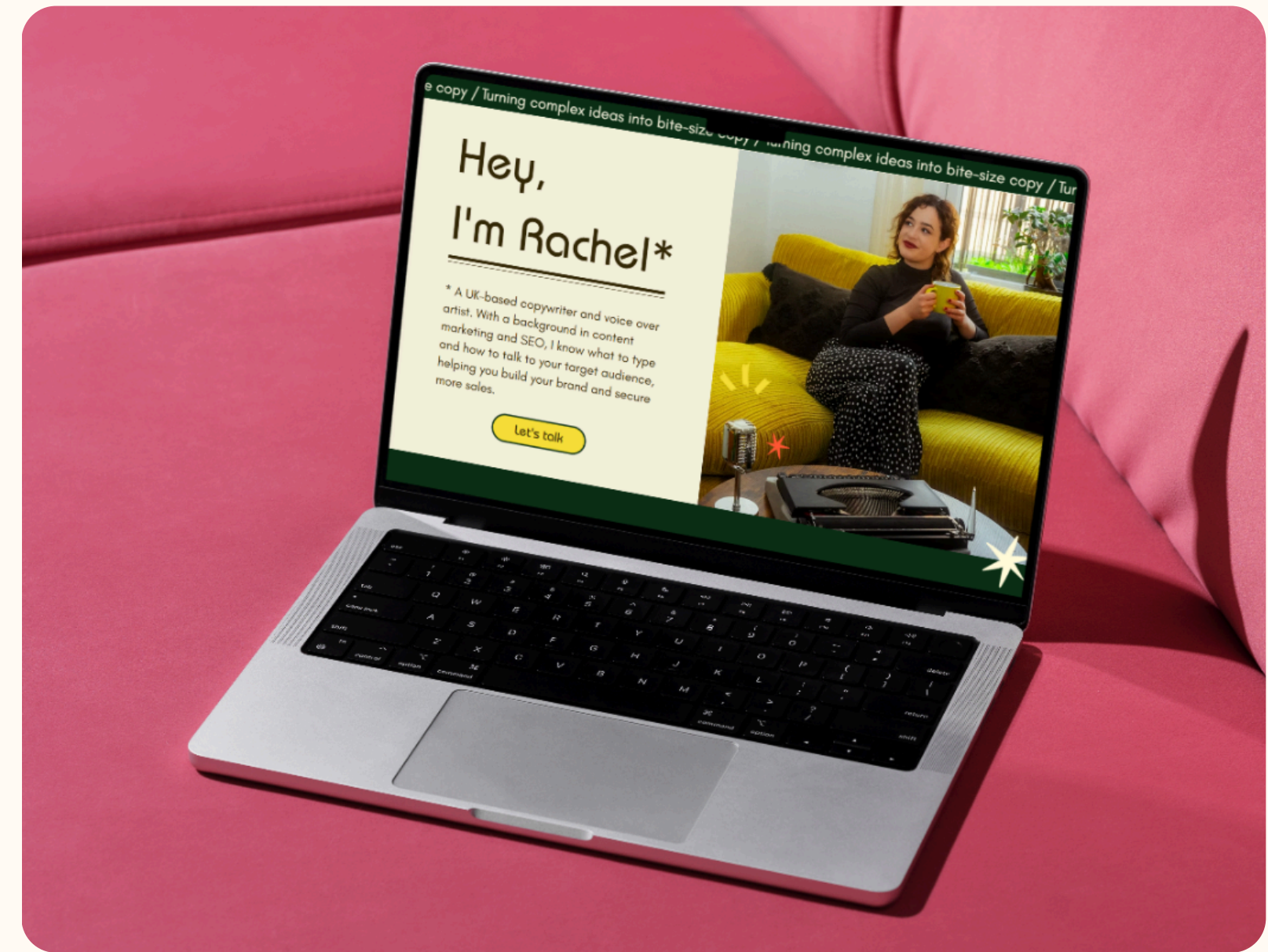
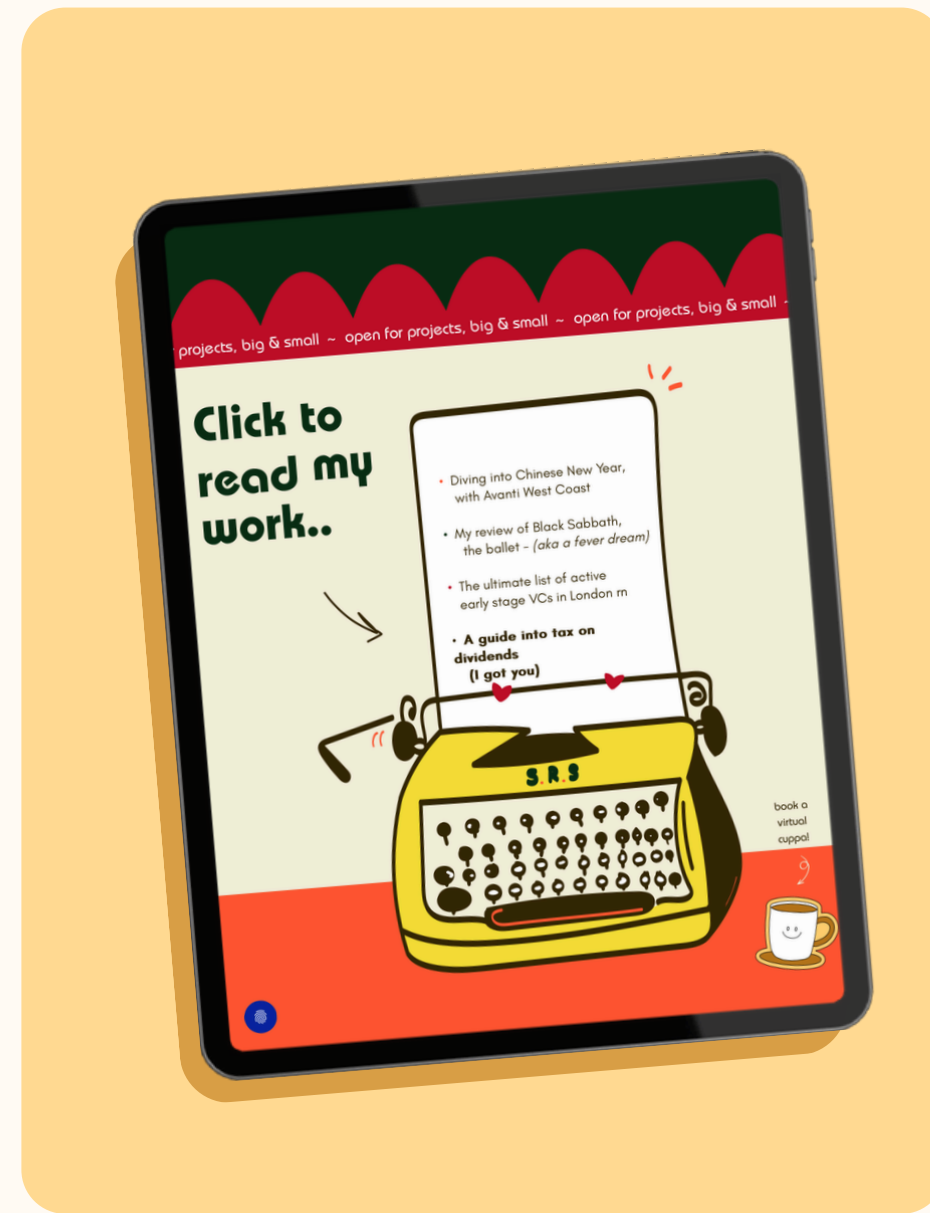
Kylie Marketing

Full, funky re-brand

Kylie wanted vibrant, racoon-filled branding that felt playful & aligned with her vibe <3

In addition to a new logo, I created Kylie a full brand suite, including colours, fonts, bespoke icons and social media assets.

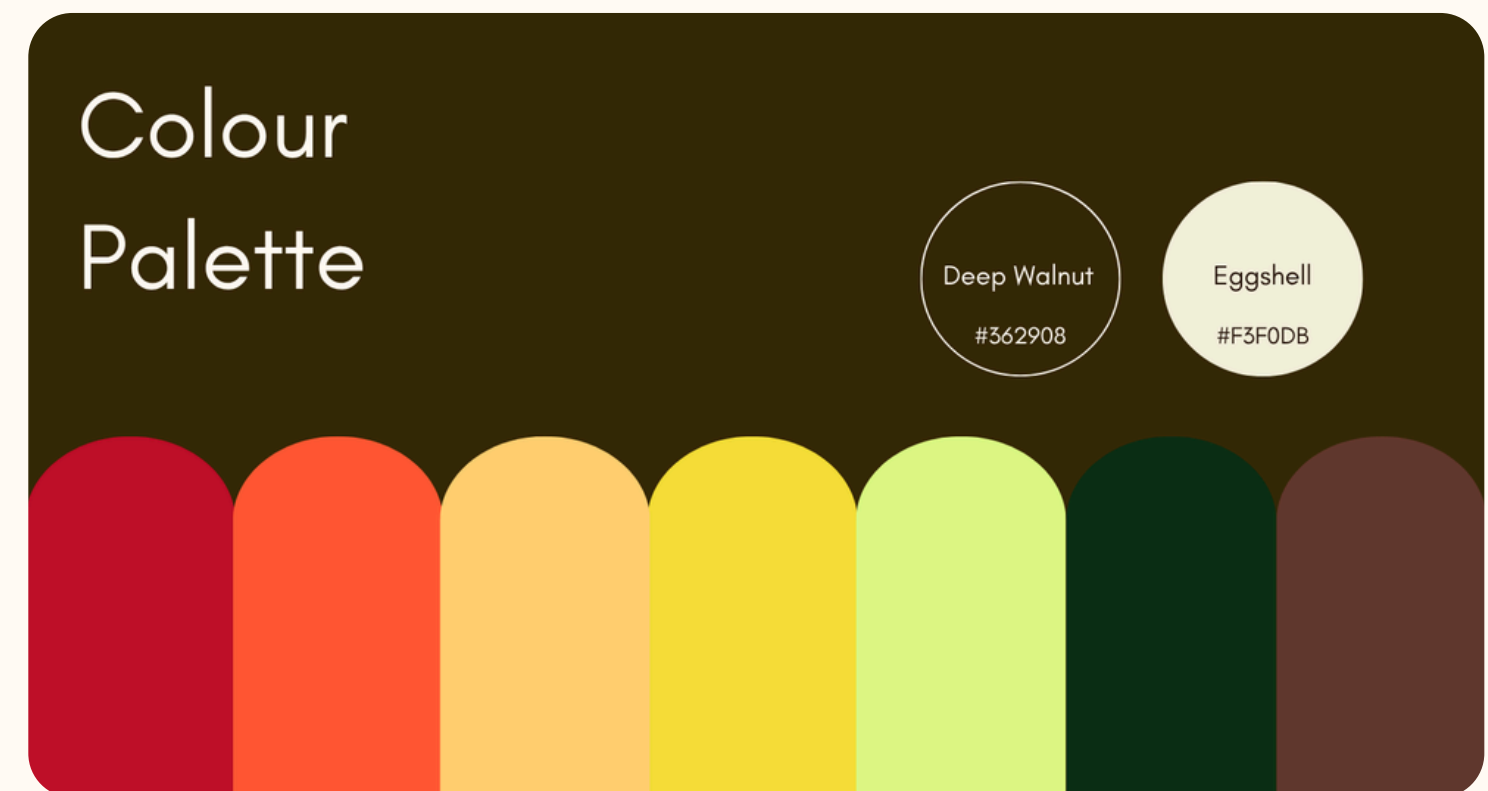
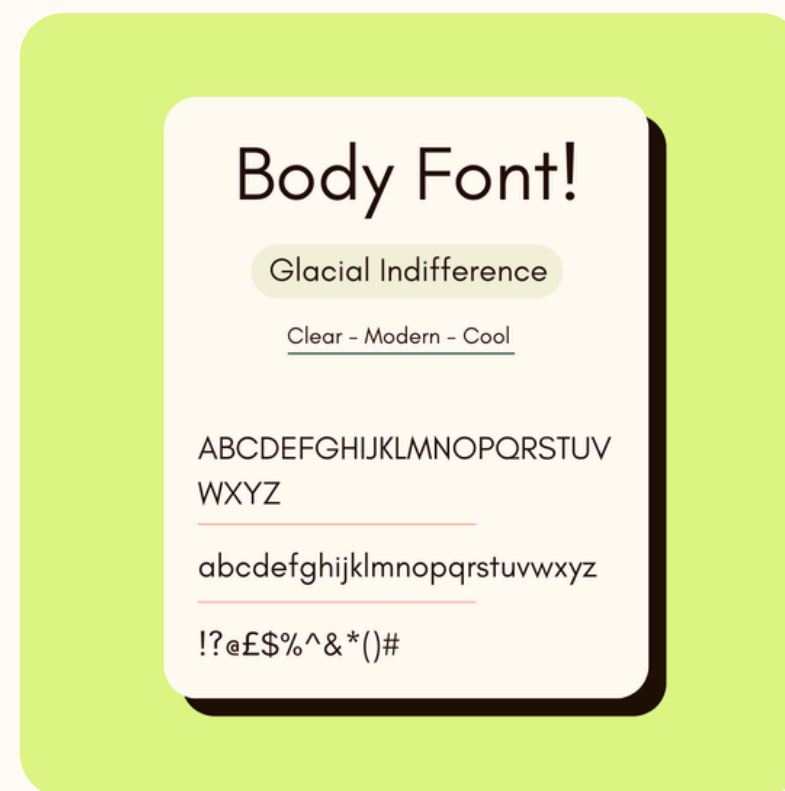


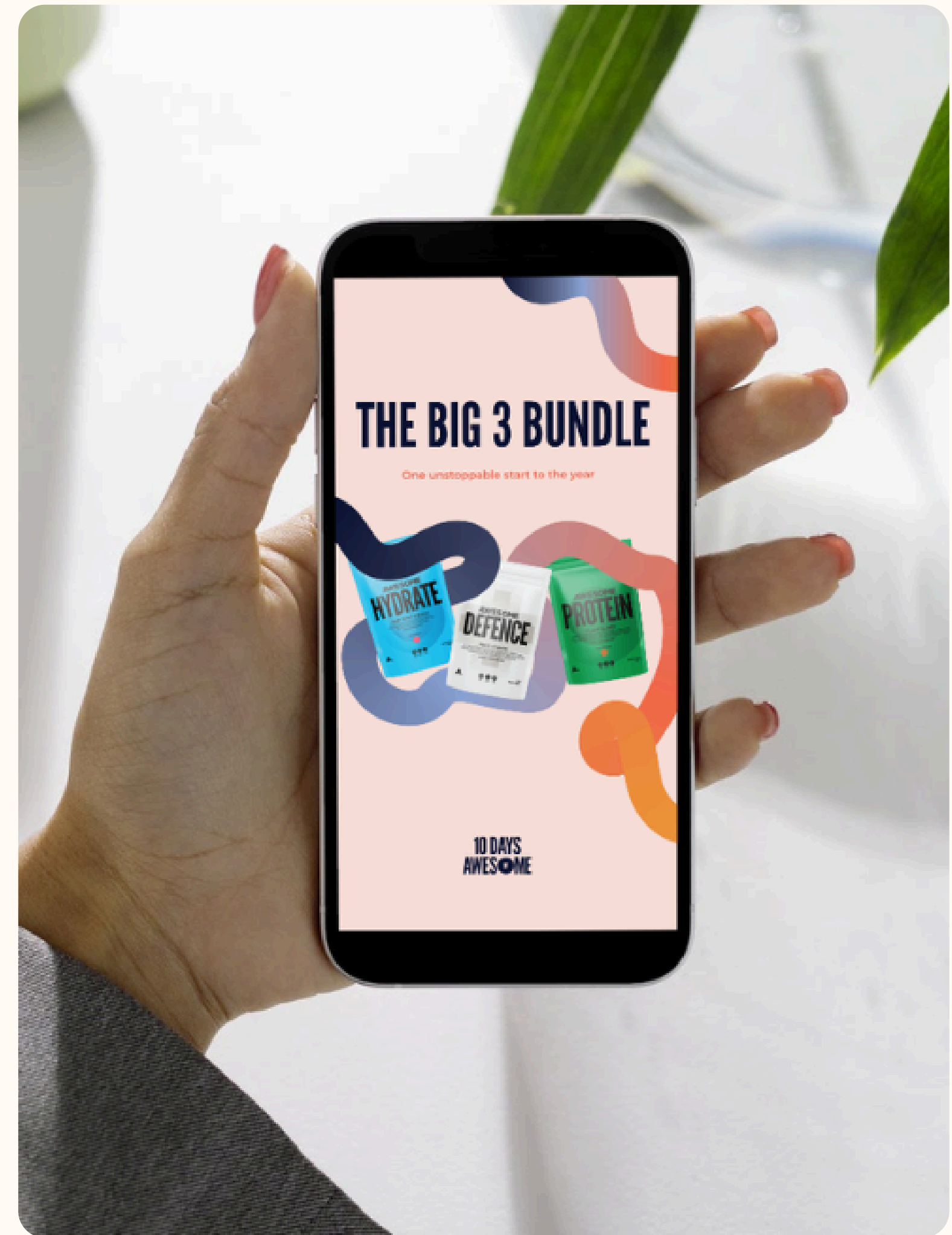


Stuff Rachel Says

Brand identity & web design

Retro and funky branding + a new accessible website for Rachel.
View the full website here <3





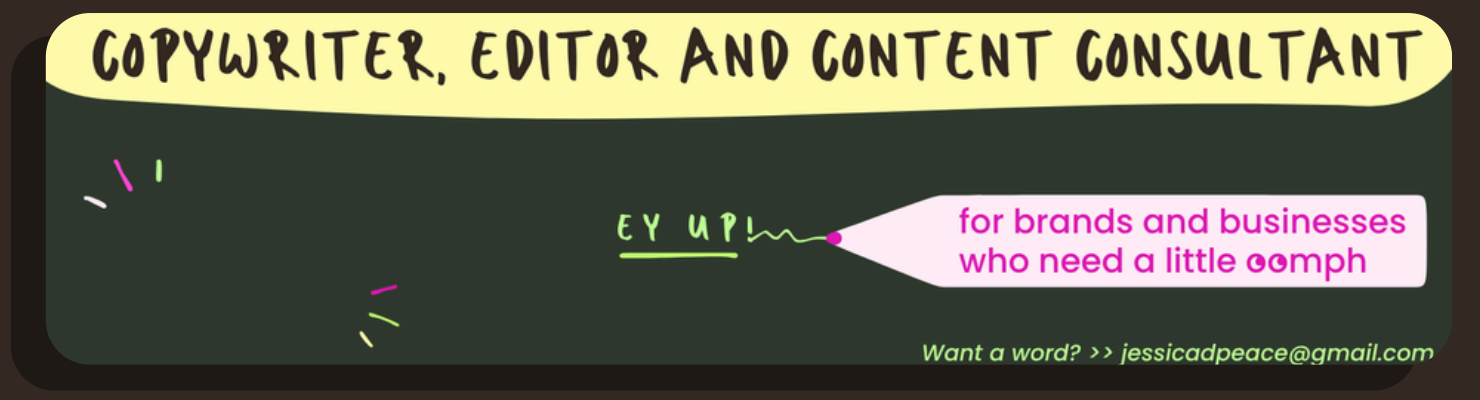
Awesome Supplements

Bespoke graphic design + presentation design

Squiggly, feel-good graphics ~ optimised to a variety of screens & situations.

Funky LinkedIn Banners

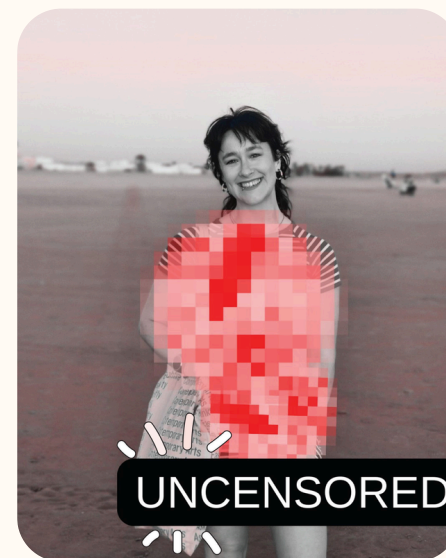
Potentially one of my favourite things to design !! Joyful, colourful & personality-filled LI banners (that are more like a custom art commission).



Maria Prendeville

Bespoke social
media designs

Vibrant, feminist designs for
Maria to use across her slice of
the internet.



Newcastle Uni, Centre for Rural Economy

Infographic design

Transformed complicated academic texts into educational and engaging digital designs :)



Participants who knew about proposed UK Agriculture Bill



Participants who did **not** know about proposed Agriculture Bill

Supporting the Growth of Innovative Rural Businesses through Rural Enterprise Hubs

Rural enterprise hubs are physical infrastructures that support small and micro businesses. They provide workspaces and business support to their users (tenants) to help them become more productive and grow

Rural areas are rarely considered in policies designed to support innovative businesses and often lack physical infrastructure, services, support and networks which encourage innovation

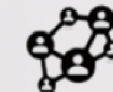


In-depth research has identified:

- Hubs are diverse in terms of ownership models, scale, target audience, location and homogeneity of clients
- A proactive attitude from hub managers is vital to ensuring success
- The four main benefits to tenants:



Improvements to productivity and wellbeing



Access to formal and informal networking opportunities



Forming new collaborations and synergies



Access to new knowledge, training, business support and signposting to specialist innovation support

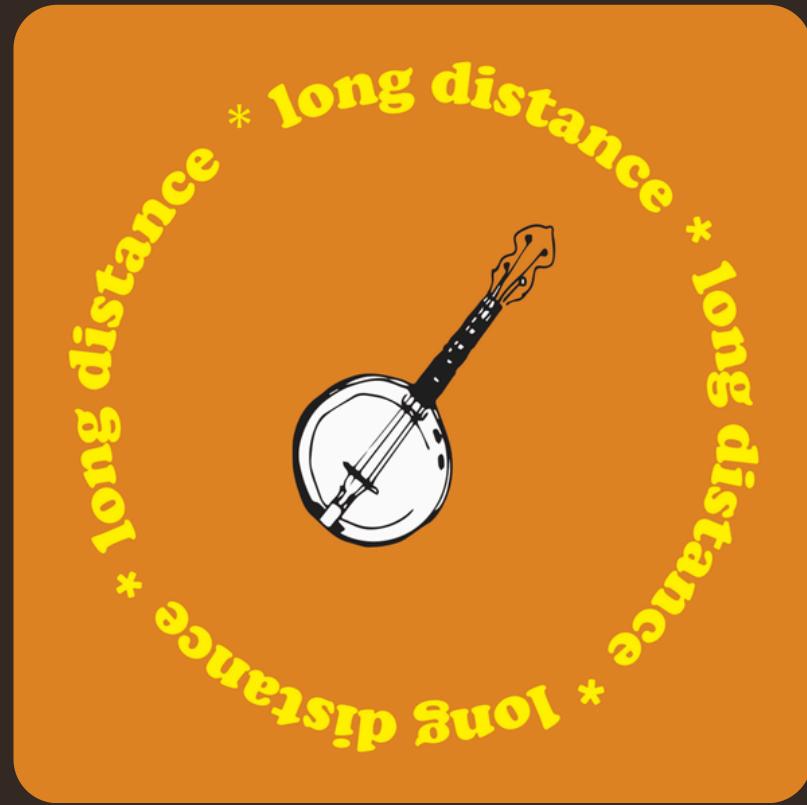
Recommendations:

1. Those running small rural business should consider the value of a professional working space provided by an enterprise hub and a meeting space for the surrounding business community

2. Rural enterprise hubs are ideally placed for providing co-working spaces to facilitate flexible working patterns and connection to a wider community. A need further highlighted by the Covid-19 pandemic

3. Those looking to boost rural economic growth and well-being should look to support or develop rural enterprise hubs both in terms of their physical space and the services that they provide

4. Hub managers should be supported so that running the hub is their core activity. This will enable them to proactively seek out opportunities and act flexibly to support their tenants needs



Logos <3

Unique, creative and memorable logos, created for a range of lovely clients.



livNman

Merch design

Feminist, inclusive + funky clothing for a Northern start-up I co-founded & ran with my bestie <3

Video & USG


(user generated content)

Planned, recorded and marketed fun & educational videos. For clients such as Newcastle University and Creative Lives in Progress.



What to do if your art is copied or stolen online





Let's work
together!

www.livcollins.co.uk
livcollins.art@outlook.com